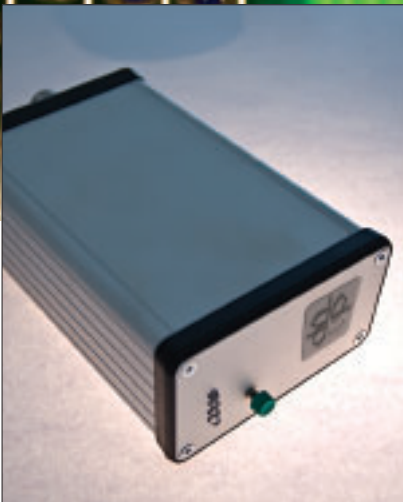


# DELTA Diagnostics



Plough Engineering Services has built on over 20 years experience of quality Plate Heat Exchanger (PHE) technology for industry with the development of the leading edge Delta Diagnostics unit.



**PLOUGH  
ENGINEERING  
SERVICES**

[plougheng.co.uk](http://plougheng.co.uk)

This pocket-sized system incorporates unique special coding for comprehensive system diagnostics with the potential to reduce testing time from four hours to as little as ten minutes.



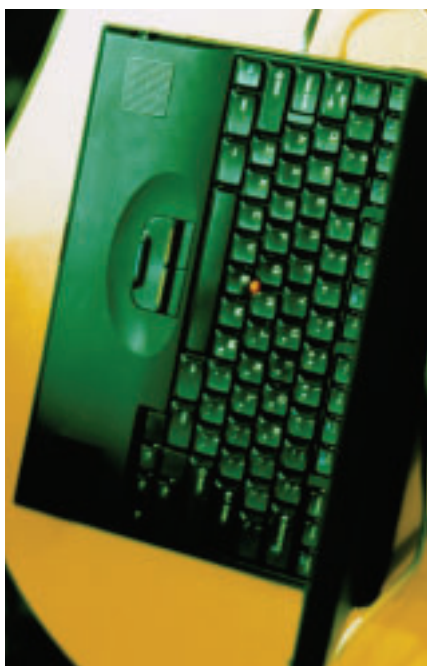
Optimised for any and all PHE inlets and outlets, it's ideal for preventative maintenance since it reduces the traditional test cycle to effectively preempt and predict faults in minutes and so help fully ensure plate integrity. Delta Diagnostics fits in a brief case, is used with a laptop and employs Bluetooth technology for true compatibility. Working on site, a Plough engineer can rapidly deliver a full report to clients on a memory stick.

It has immense practical applications across all users of PHE's. We believe that this technology is unique in the field.

## DELTA DIAGNOSTICS

### Up to the minute technology

- Can reduce testing times from 4 hours to 10 minutes
- Incorporates advanced technology unique to Plough Engineering
- Helps ensure full plate integrity
- Comprehensive maintenance report delivered on memory stick



### PLOUGH ENGINEERING SERVICES

Unit 3, Boardmans Industrial Estate,  
Hearthcote Road, Swadlincote,  
Derbyshire DE11 9DL

Telephone: 01283 215815 (24hrs)

Fax: 01283 550247  
Email: [service@plougheng.co.uk](mailto:service@plougheng.co.uk)